

# RESIDENTIAL CONTROL VALVE PANEL



## fire control system solutions

*Mitigating risks while enhancing operational efficiencies with integrated solutions*

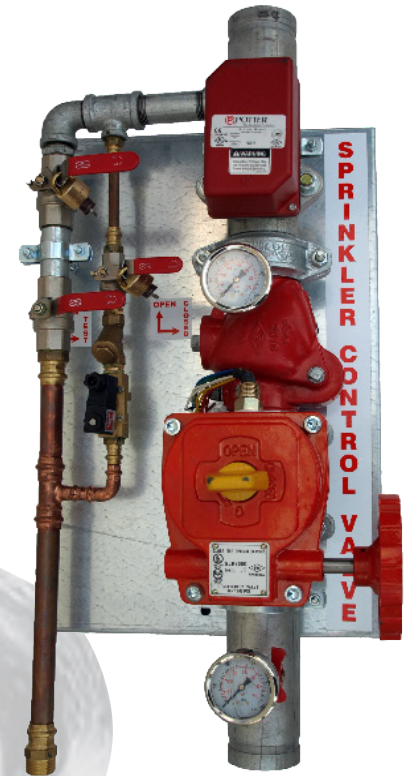
### Installation

- Incoming and outgoing pipe connections are DN50 (60.3mm OD) roll grooved mechanical couplings. Various adaptors are available to connect to different pipe sizes and pipe types.
- The panel can be fitted between wall studs or surface mounted.
- Water pressure and flow rates should be confirmed as adequate.
- Electrical connections to be installed and tested by authorised personnel.
- Test and drain line to be piped to suitable location.
- Valves are UL/FM approved.

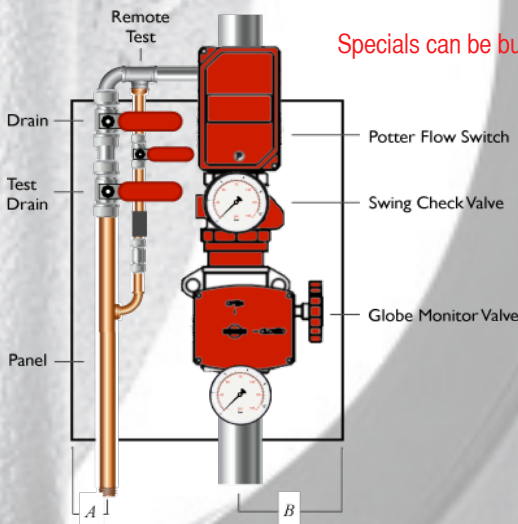
FCSS sprinkler control valve panel is designed for use in systems that include connections to pipe diameter of 50mm or 65mm. The assembly unit, which comprises high quality valve components, is tailored for easy installation and maintenance. The unit is assembled on a panel and includes a sturdy bracket to facilitate easy installation.

### Features

- Main Stop Valve** UL/FM approved gear operated butterfly valve
- Check Valve** Resilient seat full flow swing check valve UL/FM approved
- Test and Drain Valves** Brass lockable ball valve style with 10mm orifice for drain and 003 padlock
- Flow Switch** Potter brand UL/VSR approved flow switch
- Pressure Gauge** Two high quality glycerine filled gauges showing mains and system pressure at 0/2500 kpa
- Pipework** Roll grooved pipe hot dipped UL/FM approved couplings
- Testing** Hydrostatic pressure test before delivery
- Signage** Prominent sign with additional signage to operating components
- Dimension** Backing panel measured at 600mm length and 395 width
- Assembly** Built with Remote Test or Standard Build



Specials can be built in DN80 and DN100 diameter in Cabinet or Panel model



Assembly	A	B	Dimension (L x W x D)
Panel 50mm			600mm x 395mm
Panel 65mm			600mm x 395mm
Panel 80 mm			600mm x 395mm
Panel 100mm			600mm x 395mm
Cabinet 50mm	85mm	145mm	385mm x 645mm x 255mm
Cabinet 65mm			
Cabinet 80mm			
Cabinet 100mm			